



# HEALTH AND SOCIAL CARE

## PRE-EMPLOYMENT TRAINING

Each and every year, we provide training, upskilling and employment opportunities to over 10,000 people across the UK. As a candidate, you'll be better prepared for your new role and be better placed to succeed at interview.

Our training and employment support has been built around the specific needs of the employer and so, by completing the course, you will be perfectly aligned to the job role and company.

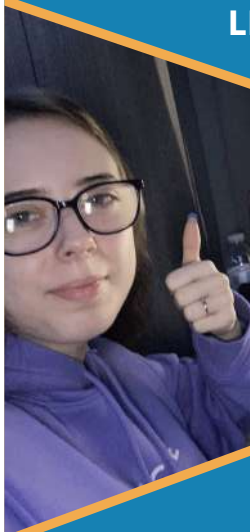
We guarantee each and every candidate an interview upon course completion. We will also continue to work with you, should you need further support or wish to change roles.

**SCAN  
HERE!**



**BACK 2 WORK**  
COMPLETE TRAINING

### LEARNER FEEDBACK



*"My tutors were fantastic, they made the work very easy to understand and follow, they were very happy to help, and they made my experience very enjoyable. I've now gained employment with these skills."*

**Amy Stokes**

*"The course itself is wonderful, everyone should do it, I couldn't recommend it enough to anyone. I now have a job working full time."*

**Paris Pocock**



# HEALTH AND SOCIAL CARE

## PRE-EMPLOYMENT TRAINING

### COURSE CONTENT

This course has been designed to give you the essential knowledge and skills when it comes to working in health and social care. This course has been designed by industry professionals to ensure that all information is relevant and up-to-date.

The course consists of the following qualifications:

- Level 2 Certificate in Understanding Specific Learning Difficulties
- Level 2 Award in Customer Service for Health & Social Care Settings
- Level 2 Award in Digital & IT Skills

Full guidance and support will be provided throughout the 19-day programme. Your work will be assessed through portfolio based evidence and you will receive coaching and support to make sure you are fully prepared to progress into employment.









**SCAN HERE  
TO SIGN UP!**

### ENTRY REQUIREMENTS

- Age 19+
- Unemployed
- Good standard of Maths and English
- Good communication skills
- Committed and willing to learn
- Eligible to work in the UK

### BENEFITS OF PRE-EMPLOYMENT TRAINING COURSES

-  Become qualified in your preferred sector
-  Continuous employment support
-  Build your confidence
-  Improve your CV with a new qualification
-  Develop employability skills
-  Progress into employment

**BACK 2 WORK**  
COMPLETE TRAINING